



# HMR WATERFRONT

A PROJECT BY HMR GROUP

HEART OF THE OCEAN





Project Approved By  
DHA, Karachi



HEART OF THE  
OCEAN









## THE WORLD OF HMR

You are at the heart of everything we do.

Led by Haji Muhammad Rafiq Pardesi, HMR Group is a real estate development giant in Pakistan and an acclaimed name in the UAE. Haji Mohammad Rafiq began his career in 1982 by joining his Dubai based family business, established by his forefathers over a century ago in British India. His focus on both, trade and regional diversification expanded the business beyond in UAE, Pakistan and Africa. After crafting significant projects in UAE, he laid foundations of a few of the global real estate giants in Pakistan to provide better living to its people and contribute towards the prosperity of the nation. The inauguration of the HMR Group in 2015 provided Haji Muhammad with continued growth, allowing him to reach new heights of success and fame.

With a keen vision to modernize the live-in experience of the Pakistani customer base, HMR's goal is to introduce exclusive real estate development projects across the country, comprising of internationally recognized, high-rise and medium-rise residential and commercial towers.

### CRAFTING EXTRAORDINARY LUXURY – OUR PROJECTS

With a focus on diversification and innovation, HMR Group has steadily become the brand of choice in delivering quality, novelty and service. One of these innovative projects, Goldcrest Views at Jumeirah Lake Tower, won 'The Best Developer Award' for design and quality by Citiscap.



# OUR PROJECTS



GOLD CREST  
VIEW 1  
JLT DUBAI, UAE



GOLD CREST  
VIEW 2  
JLT DUBAI, UAE



JAHANGIR KHAN  
SPORTS CLUB  
KARACHI, PAKISTAN



GOLD CREST  
MALL & RESIDENCY  
DHA LAHORE, PAKISTAN



Welcome to

## HMR WATERFRONT

Located at the edge of the Great Arabian Sea, HMR Group is proud to introduce HMR Waterfront. A luxurious gated community that encloses fourteen high-rise residential towers, facilitated with modern amenities and efficient security to enjoy a peaceful, entertaining and contemporary lifestyle. A marvel that encompasses all necessities of family living. HMR Waterfront is surrounded by green open spaces, a mosque, a marine walk promenade and retail outlets for food beverages, and other necessities including exclusive car parking for the residents.

With an enviable premium living experience, the Waterfront offers a revolutionary business district. The Commercial Tower entails top-notch business centers, offices, retail spaces, restaurants and coffee shops. Additional facilities include high-speed elevators, abundant basement car parking and podium floors. The project also comprises of a dedicated grid station with backup generators to ensure an uninterrupted supply of electricity and a private filtration plant for sufficient water delivery. A beautiful seafront promenade and a beach clubhouse, overlooking the glistening Arabian Sea, are all set to provide families with the finest social and living experience.





# **What Makes The Heart So Precious?**







SEAFRONT PROMENADE

---



LUXURY BEACH

---



BEACH CLUBHOUSE

---



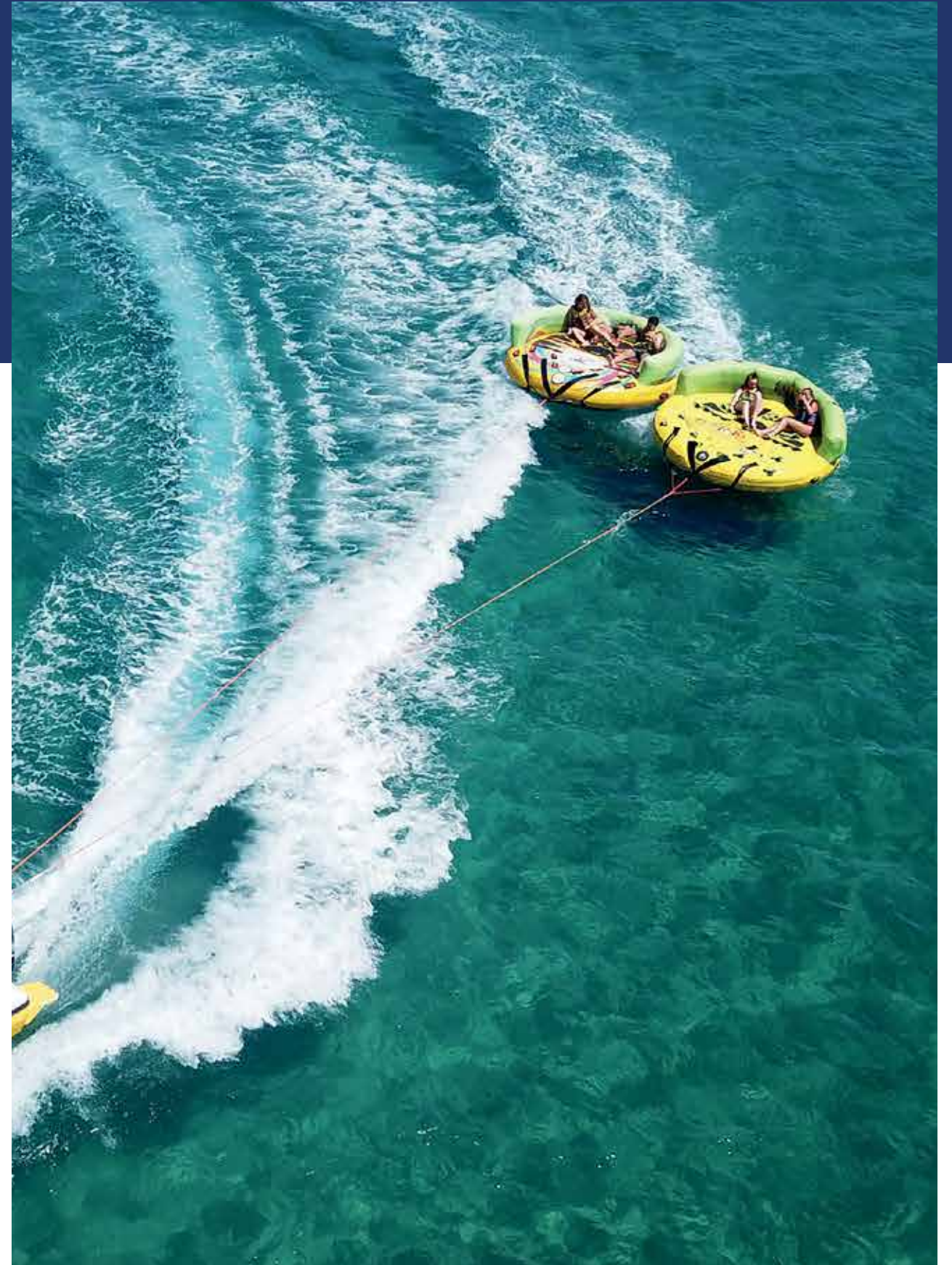
MOSQUE

---



**LANDSCAPE & COMMUNITY PARKS**

---



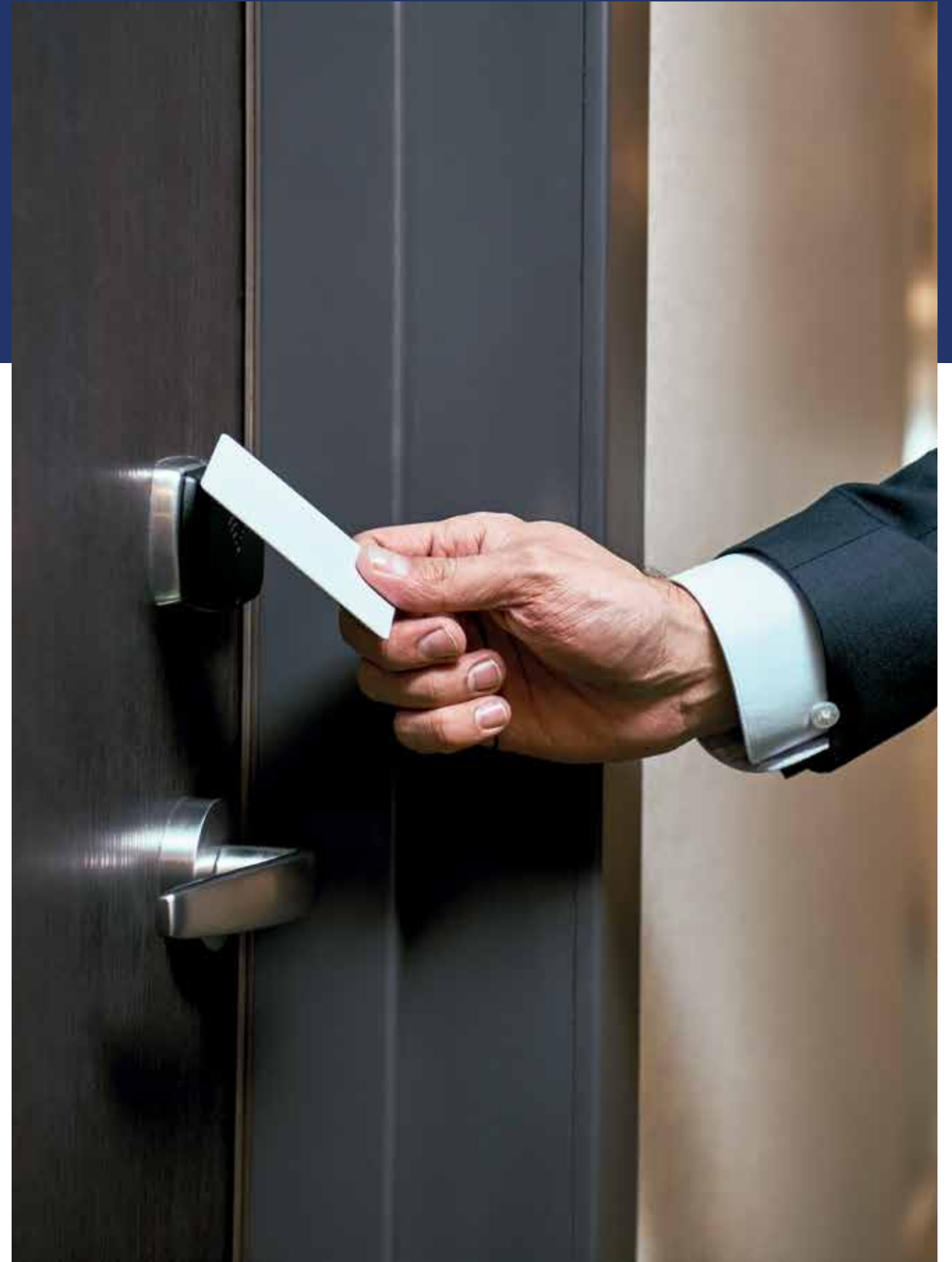
**WATER SPORTS ACTIVITIES**

---



**GATED COMMUNITY**

---



**AUTHORIZED ACCESS**

---



# HMR WATERFRONT

A PROJECT BY HMR GROUP

Surrounded by the Arabian Sea, this world-class community is arguably the most elegant and timeless beauty. A stunning skyline that will inspire the residents and visitors from around the world. It is a profound architecture, comprising of a luxury infinity pool, stylish residential lounge, well-equipped gym and much more.

## SITE MAP



### H-1 Tower PLOT NO. 6

AMNESTY REGISTERED PROJECT | ESCROW ACCOUNT | SECURED GATED COMMUNITY | HEALTHY LIFE STYLE

SECURED INVESTMENT WITH GREAT RETURNS | SPACIOUS APARTMENT SIZES & FLOOR PLANS | SEPARATE FLOOR PLATES

ELEVATED COMMUNITY FROM DHA ROAD LEVEL | IN-HOUSE RO PLANT | IN-HOUSE SEWAGE TREATMENT PLANT



- **Elegant Reception**
- **24 hours Concierge**
- **Sea and Boulevard View Apartments**
- **Open Terraces**
- **Arabian Sea Front Infinity Pool**
- **Multi-Purpose Hall**
- **Fully Equipped Gym**
- **Key Card Access**
- **Spacious Bedrooms**
- **Modern Bathrooms**
- **Built in Kitchen**
- **Maid's Room with Attached Bath**
- **Fire Life Safety Certified Lifts**
- **Evacuation System**
- **24/7 CCTV Surveillance**
- **Parking x 8 Floors**
- **2 Emergency exit Staircases**
- **Driver's Rooms on each Parking Floor**



## RECEPTION

---



## WAITING AREA

---



## INFINITY POOL

---



**GYM**

---



**HIGH SPEED ELEVATORS**

---

# TOWNHOUSE

Elegant townhouses embody luxury and innovation, all the while, overlooking the glorious Arabian Sea.





# 1 BEDROOM

1-bedroom apartments perfectly built to provide comfort and style to the modern family.





## 2 BEDROOM

Spacious 2-bedroom apartments equipped with cutting edge amenities offering convenient, modern and luxurious living.





# 3 BEDROOM

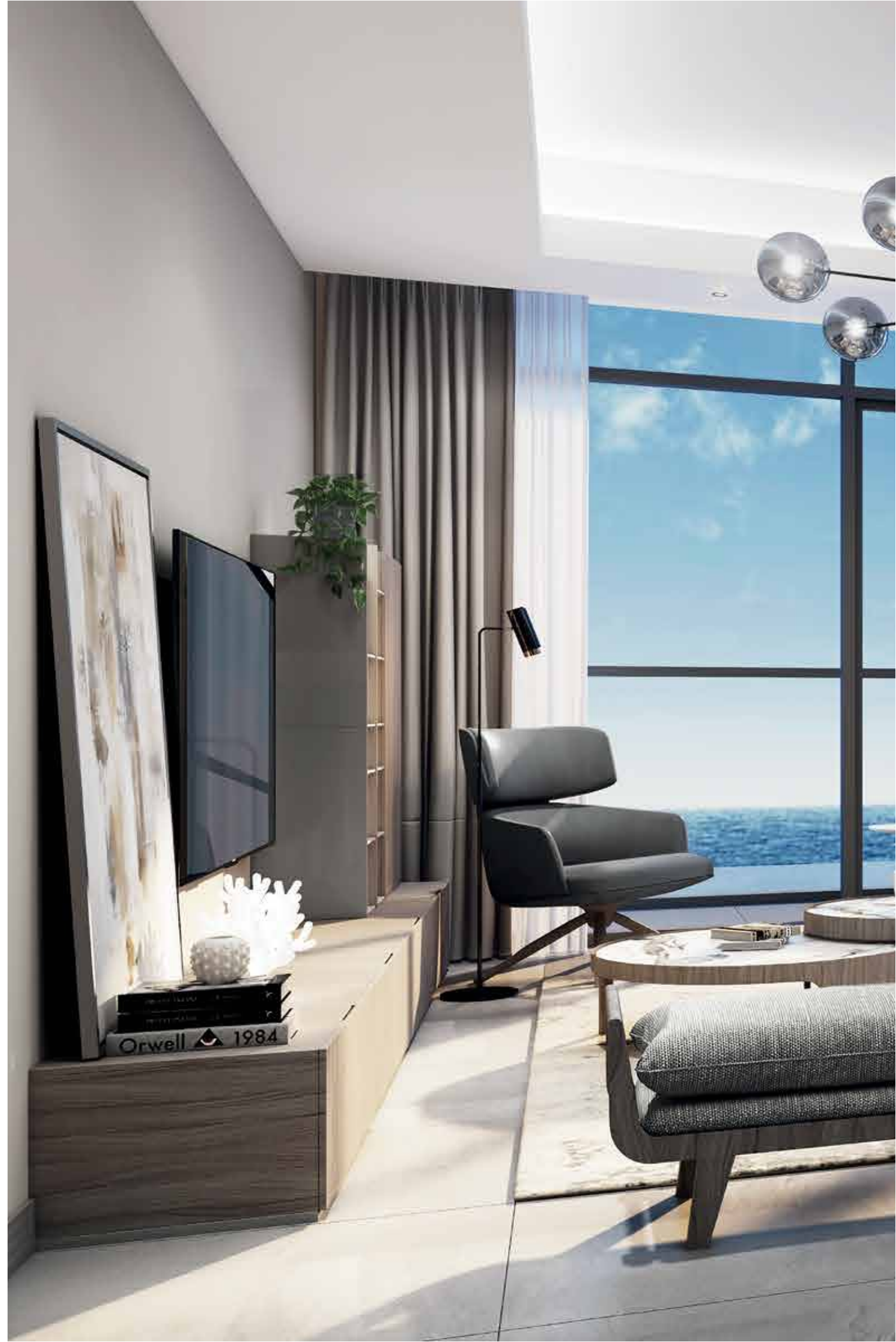
Exclusive 3-bedroom apartments  
crafted with the utmost care to  
offer the comfort of a home and  
the luxury of a hotel.





# 4 BEDROOM

Luxurious 4-bedroom apartments, facilitated with modern amenities for a comfortable contemporary living experience.





# PENTHOUSE

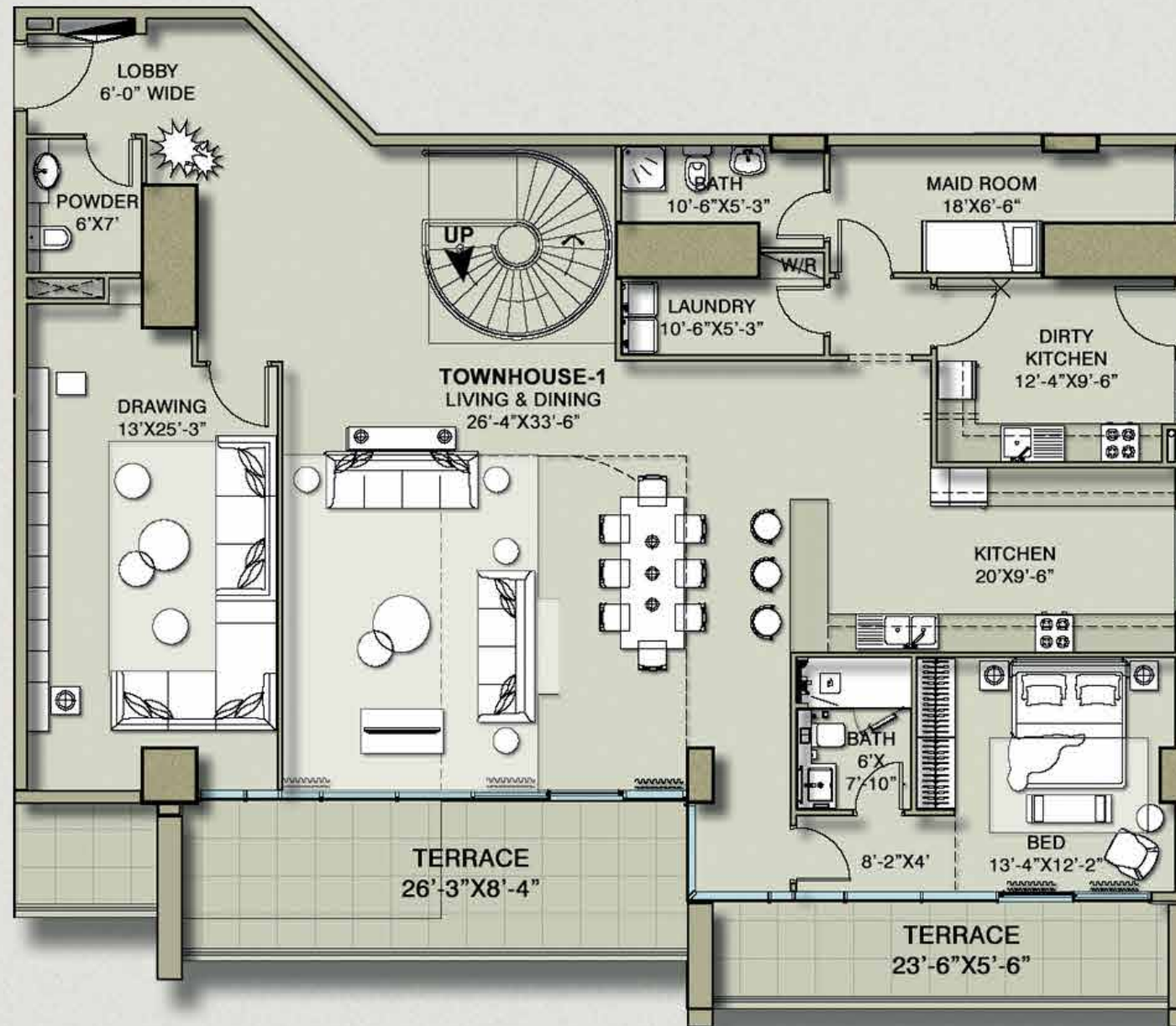
The beautifully designed penthouses rest on the highest floors with a breathtaking view of the horizon.



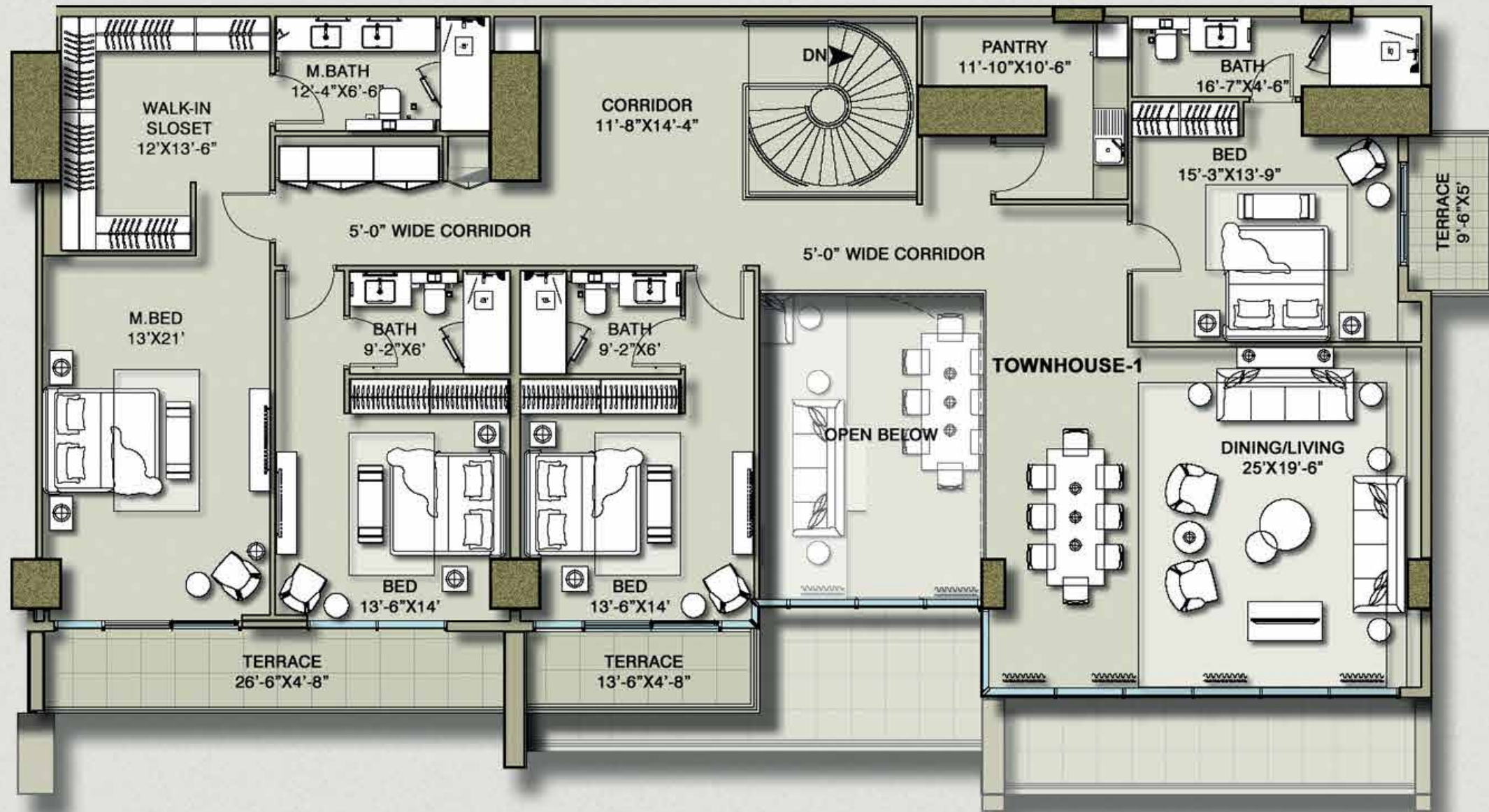


# UNIT FLOOR PLAN



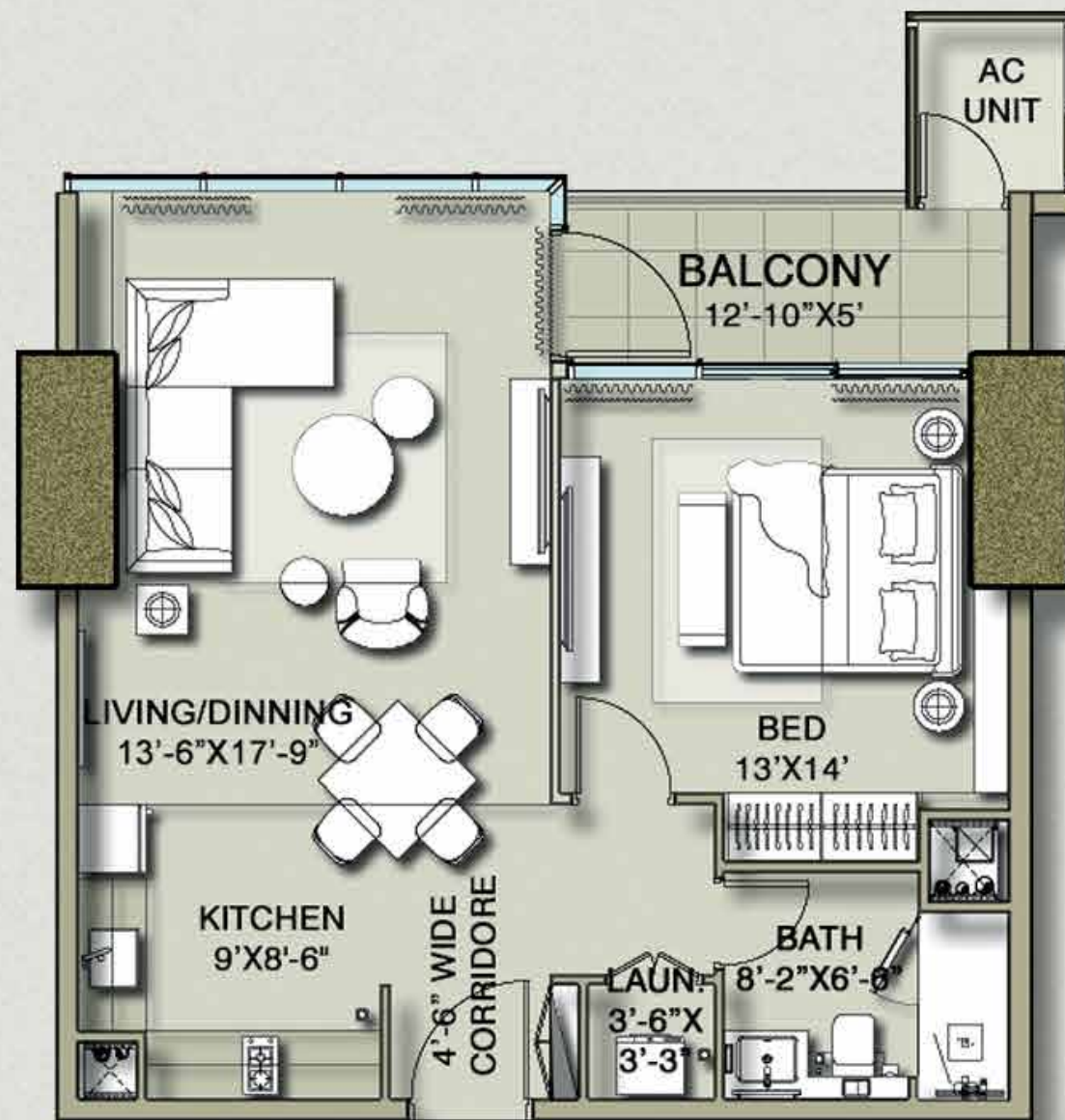


**TOWNHOUSE - LOWER LEVEL**



6899 - 7589 (sqft)

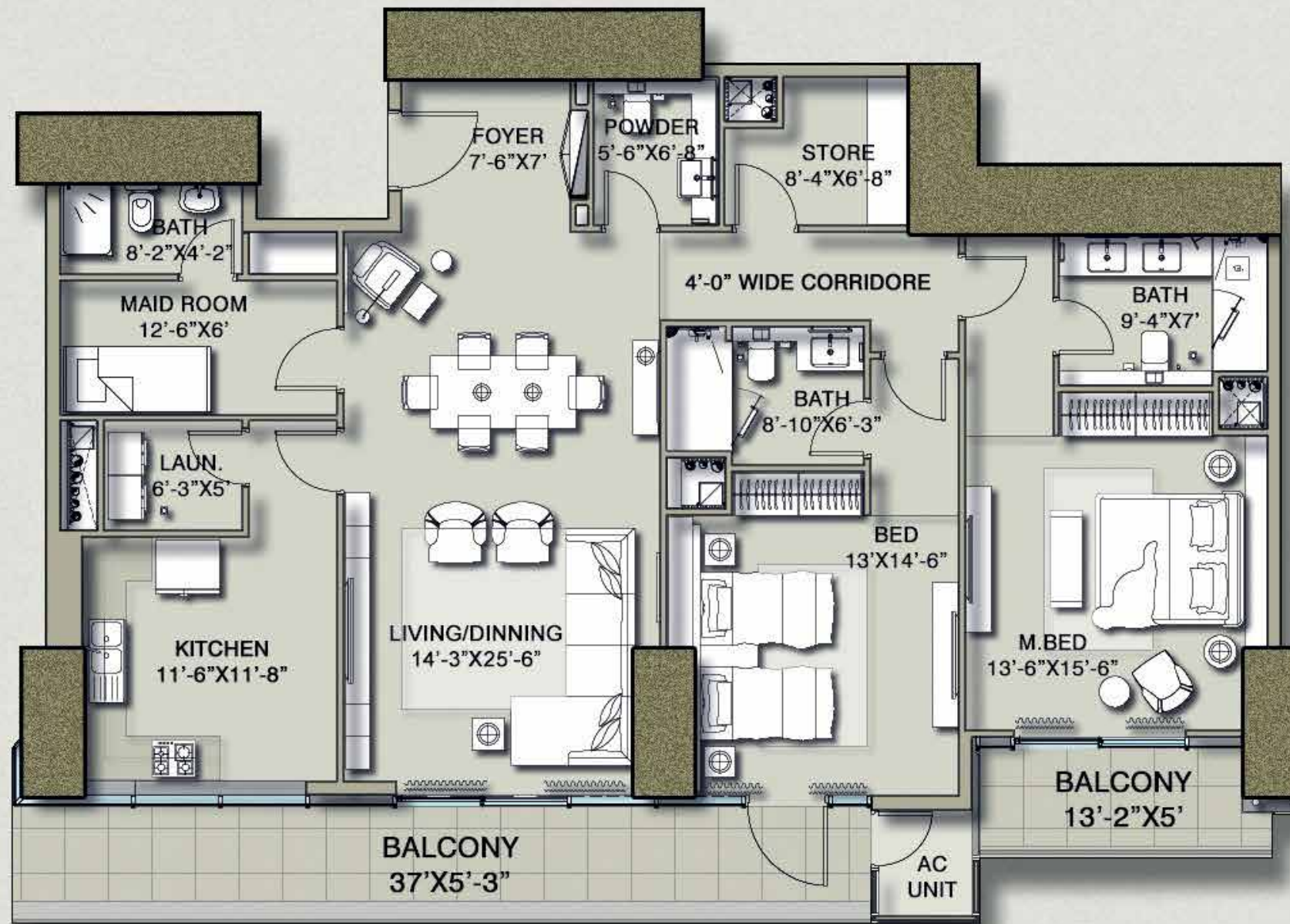
TOWNHOUSE - UPPER LEVEL



907 - 1121 (sqft)

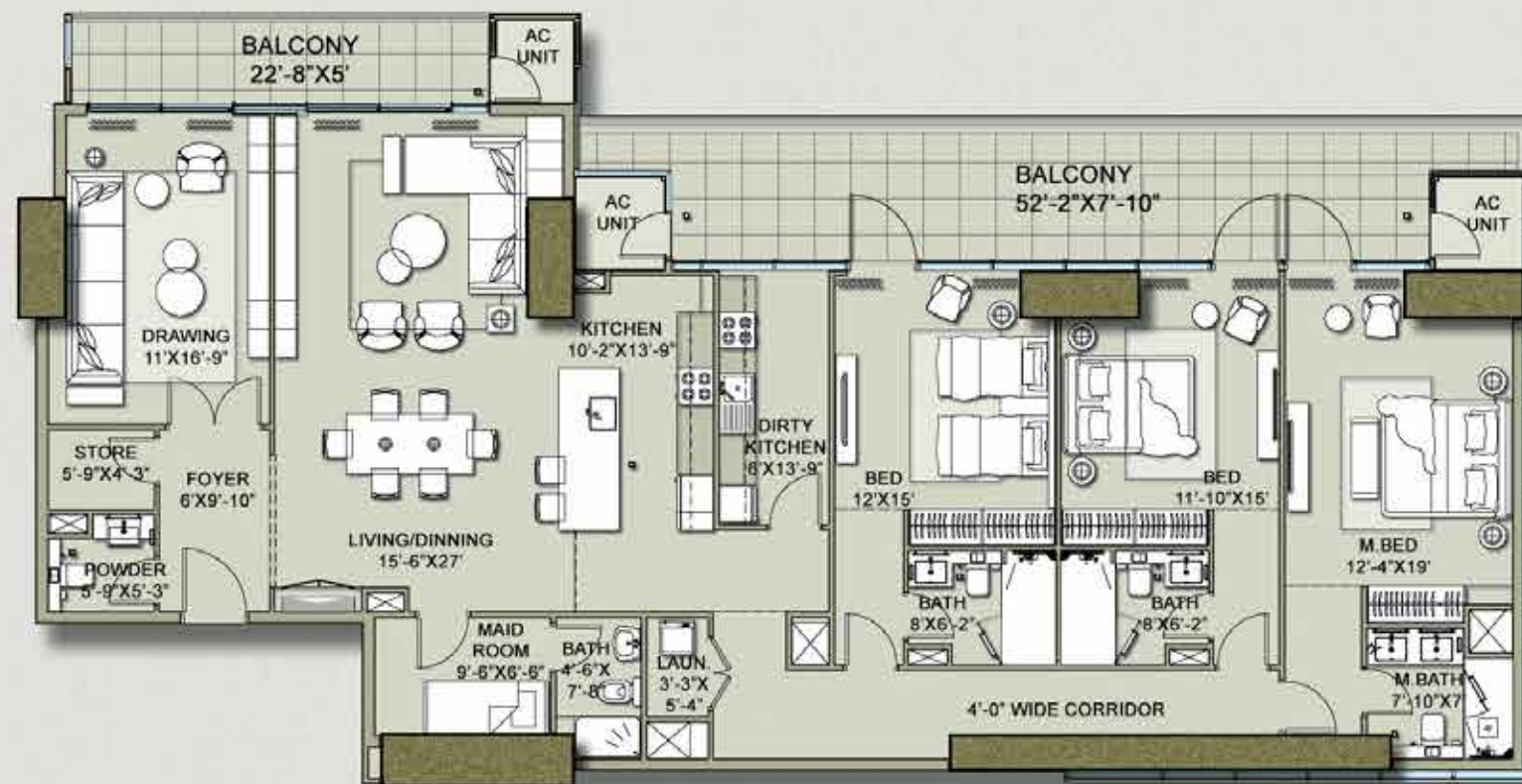
1 BEDROOM APARTMENT

---



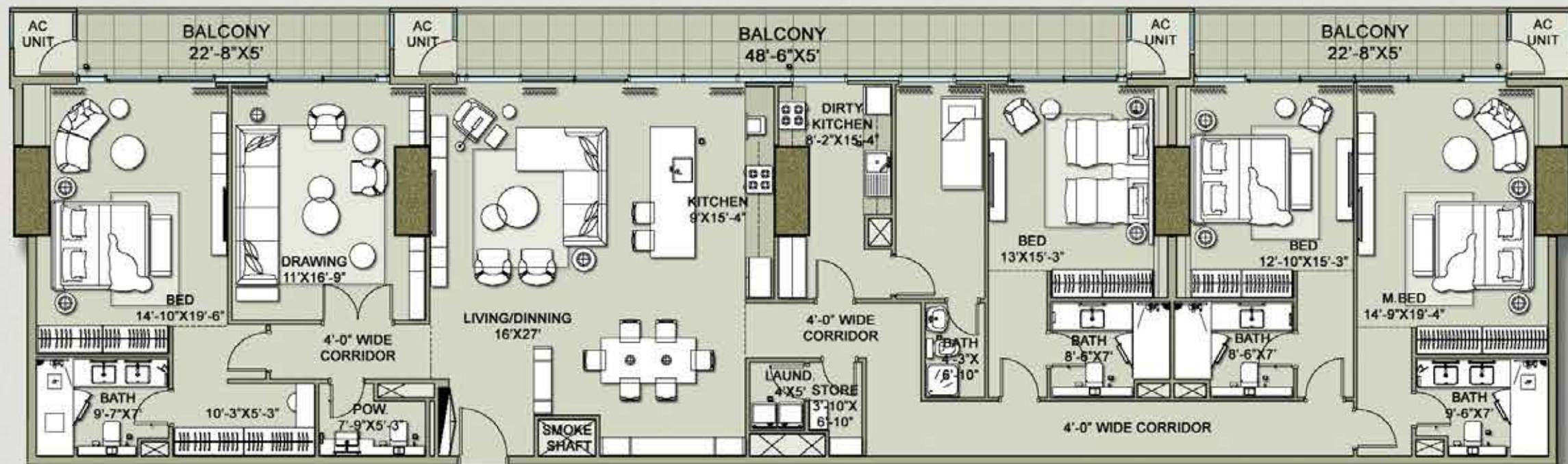
2037 - 2433 (sqft)

2 BEDROOM APARTMENT



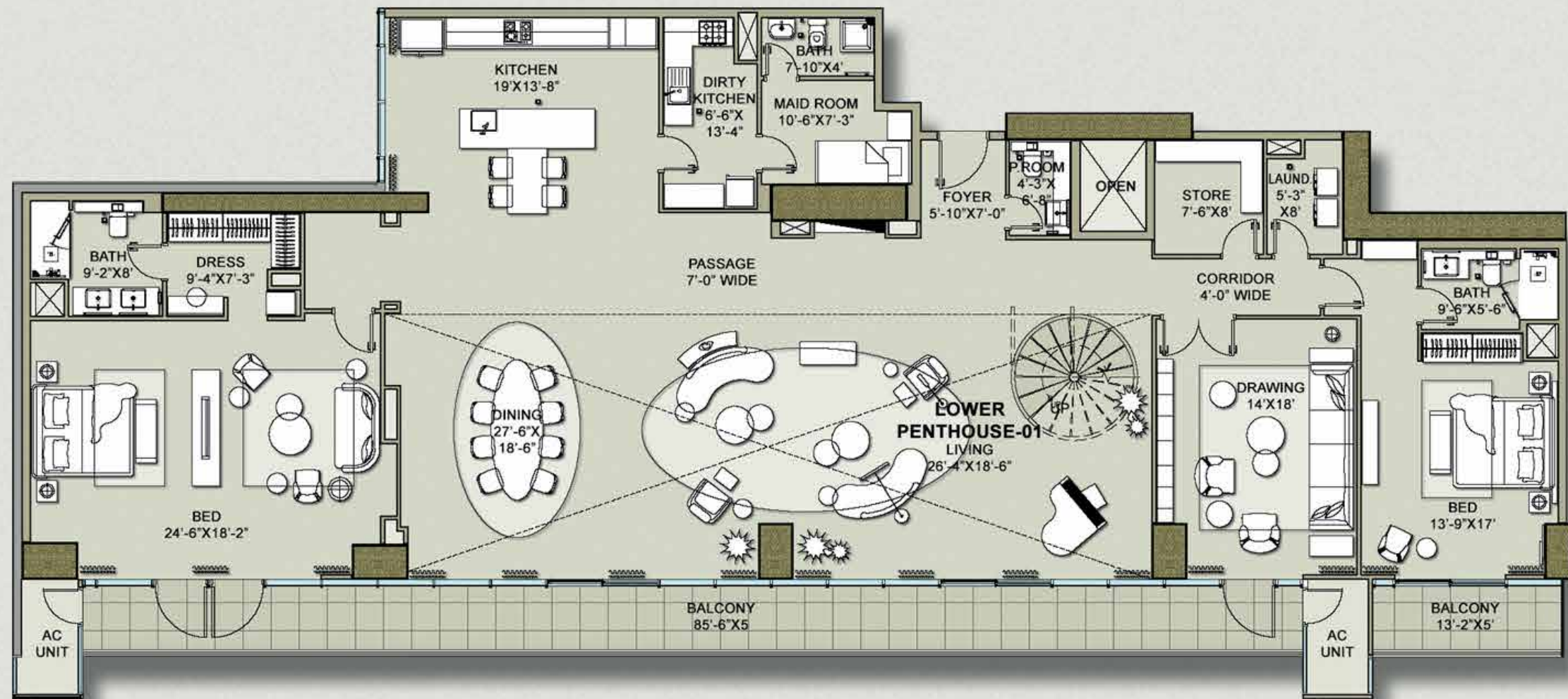
3086 - 3438 (sqft)

### 3 BEDROOM APARTMENT

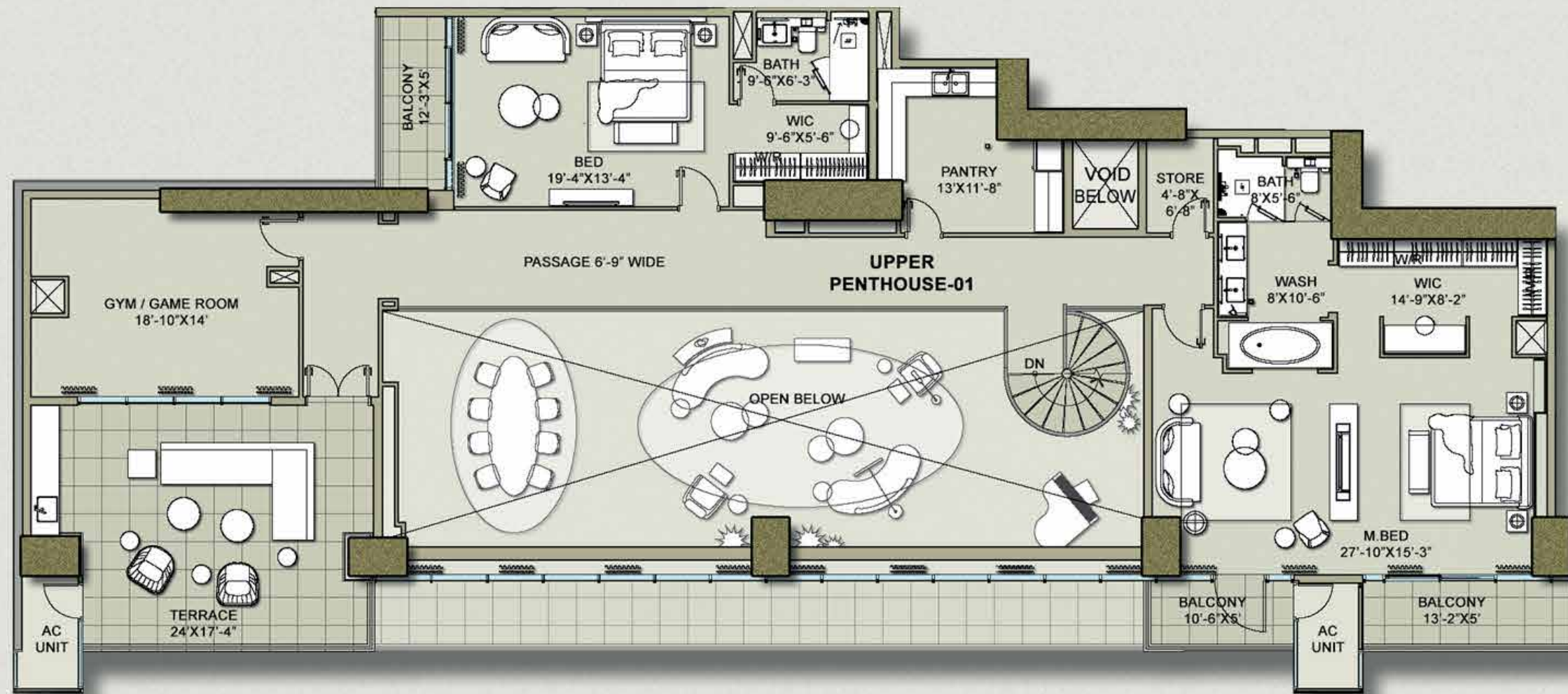


4250 - 4375 (sqft)

## 4 BEDROOM APARTMENT



**PENTHOUSE - LOWER LEVEL**



8356 - 8933 (sqft)

**PENTHOUSE - UPPER LEVEL**

## THE LOCATION

Located at the edge of the Great Arabian Sea, HMR Waterfront is a coastal residential tower, offering the alluring experience of living the high-life with a gorgeous view of the beach.



A r a b i a n



SHAHRAH-E-FAISAL

DHA PHASE 6

SEA VIEW ROAD  
KHAYABAN-E-ITTEHAD ROAD  
DHA PHASE 8

ABDUL-SATTAREDHIAVE

Dolmen Mall

Ramada Hotel

Clock Tower

DHA Golf Club

Do Darya Food Street



S e a

7.6 km - Dolmen Mall Clifton | 3.6 km - DHA Golf Club

**HMR Waterfront Sales Office,**  
Abdul Sattar Edhi Avenue, D.H.A. Phase 8 Ext.  
75500 Karachi, Pakistan.

**Helpline Number:** +92 (21) 111 111 467

**WhatsApp:** +92-306-1110467

**Website:** [www.hmrwaterfront.com](http://www.hmrwaterfront.com)

**Project:** HMR Waterfront

**Tower:** H-1

**Developer:** HMR Group

**Email ID:** [info@hmrwf.com](mailto:info@hmrwf.com)



**HMR WATERFRONT**  
**HMR GROUP**